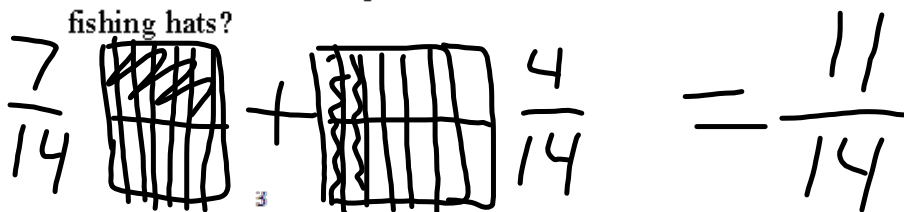


Name: _____

Use an Area Model to Add & Subtract Fractions

Directions: Use the area (grid) model to solve the problems below. Draw the grids on a separate sheet of paper and use the space provided to explain how you know your answer is reasonable.

1. Johnny loves hats and has collected them for years. $\frac{1}{2}$ of his hats are baseball hats and $\frac{2}{7}$ of his hats are fishing hats. What fraction of his hat collection are baseball hats or fishing hats?



2. Josue poured $\frac{3}{4}$ of a glass of milk for breakfast. He quickly drank $\frac{3}{8}$ of the glass of milk. How much milk does Josue have left to drink with the rest of his breakfast?

3. Mary's hair was $\frac{5}{6}$ yards long before she decided cut most of it off and donate it. Her hair dresser cut off $\frac{1}{2}$ of a yard of her hair. What fraction of a yard does Mary's hair measure now?

4. Amy put $\frac{4}{5}$ cups of chlorinated water in her group's aquarium on Monday. On Tuesday her teacher asked her add more chlorinated water until she had 1 whole cup of chlorinated water. Amy put $\frac{1}{6}$ of a cup of chlorinated water into her group's aquarium. How much water is in Amy's group's aquarium? Did she meet her teacher's request?